

## 12 DAYS UGANDA ADVENTURE TOUR



*HIGHLIGHTS: Game drives, Boat rides, Chimp trekking, Gorilla Trekking and Nature walk*

### Day 1:04.09.23



#### ARRIVAL ENTEBBE

On arrival at Entebbe International Airport in Uganda and after finalizing the formalities, you shall be welcomed by your guide, who will then drive you to your hotel.

**Accommodation; Latitude Hotel**

**Meal: B,-,-**

**Transit Time: Approximately 45 minutes' drive**

### Day 2:05.09.23



#### RHINOS AND MURCHISON FALLS NATIONAL PARK

After breakfast you shall start your tour. Driving through Kampala, you proceed to Ziwa Rhino Sanctuary. Here you shall have a walking Safari to the Southern Park to trek White Rhinos that have been re-introduced in Uganda. In the afternoon you will drive to the legendary Murchison Falls, from which the National park derives its name. On arrival in Murchison, you will visit the top of the falls where the Nile squeezes through a 7 meter gap

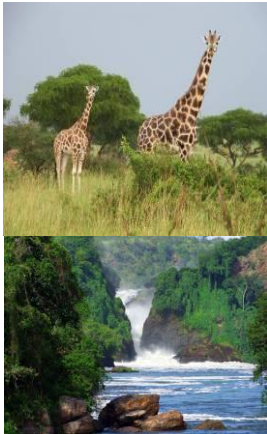
**Accommodation: Paraa Safari Lodge- deluxe rooms**

**Meal: B,L,D**

**Transit Time: Approximately 6 hours', 339kms**

**Day 3:06.09.23**

**GAME DRIVE AND LAUNCHCRUISE ON THE RIVER NILE**



After an early breakfast, proceed for a game drive. This is a beautiful drive across savannah, Borassus Palm Forest and grassland down to Lake Albert where the Albert Nile heads north. Drive in the open African savanna in search for Lions, Leopard, Hyena, Buffalo, Elephant, Jackson Hartebeest. Oribi, Waterbucks, Uganda Kobs, and enjoy spotting various Bird species such as the Secretary Bird, Black Chested Snake Eagle, Tawny and Marshal Eagles Carmine and Swallow Tailed Bee-Eaters and many more. In the afternoon, go for a boat ride up the Nile, to Murchison falls, whence the park derives its name. Enjoy these spectacular falls

**Accommodation: Paraa Safari Lodge- deluxe rooms**

**Meal: B,L,D**

**Day 4:07.09.23**

**DRIVE TO KIBALE NATIONAL PARK**



After breakfast, you will be driven to Kibale Forest National Park.

In the afternoon you will arrive at your accommodation. While driving, you will depart early in the morning for Kibale to your accommodation while passing by tea plantations along the way.

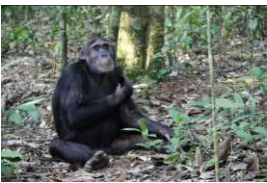
**Accommodation: Primate Lodge**

**Meal: B,L,D**

**Transit time: Approx. 4,5 hours' driving time**

**Day 5:08.09.23**

**1<sup>ST</sup> CHIMPANZEE TREKKING AND BIGODI SWAMP WALK**



After breakfast you will go for Chimp tracking and enjoy a wonderful forest experience. Kibale's 795km<sup>2</sup> National Park contains one of the most beautiful and varying tracts of tropical forest in the whole of Uganda. This is home to 13 species of primate including chimpanzees. The park's highest point is at 1590m above sea level. There are 4950 chimpanzees within Uganda; Kibale Forest alone has the most with almost 1500 Chimpanzees. In the afternoon after tracking, you have the opportunity to take a guided walk through the swamps of Bigodi or in a nearby village.

**Accommodation: Primate Lodge**

**Meal: B,L,D**

**Day 6:09.09.23  
PARK**

**2ND CHIMPANZEE TREKKING - QUEEN ELIZABETH NATIONAL**



After breakfast, you will go back for a 2<sup>nd</sup> Chimpanzee trekking in Kibale Forest National Park. After lunch you shall proceed to Queen Elisabeth National Park, enjoy a game drive on your way in. Named after her Majesty the Queen of England, it is Uganda's most popular and most scenic game reserves. It stretches from the crater-dotted foothills of the Rwenzori range in the north, along the shores of Lake Edward to the remote Ishasha River in the south, incorporating a wide variety of habitats that range from savanna and wetlands and lowland forest

**Accommodation: Elephant plains Lodge**

**Meal: B,L,D**

**Transit time:**

**Approx. 2-3 hours, 130 km**

**Day 7:10.09.23**

**GAME DRIVE, BOAT RIDE ON THE KAZINGA CHANNEL**



Have an Early Morning Game Drive. There are over 100 mammal species that include Lions, Hippos, Buffaloes, Leopard, Spotted Hyena, Elephants and the elusive Giant Forest Hog in this park. The Primates include Chimps, Black and White Colobus Monkeys, Blue, Black faced Red Colobus, and Red-tailed monkeys and Olive Baboons. Return to the Lodge. In the afternoon, you shall have a boat ride on Kazinga Channel. Queen Elizabeth boasts one of the highest bio diversity ratings of any game park, from the open Savannah to Rain Forest, dense Papyrus Swamps and Crater Lakes to the vastness of Lake Edward.

**Accommodation: Elephant plains Lodge**

**Meal: B,L,D**

**Day 8:11.09.23 DRIVE TO BWINDI NATIONAL PARK**



Depart for Bwindi National park in the morning home of the Mountain Gorillas. Of Uganda's Forested Parks, Bwindi Impenetrable National Park is best known for gorilla tracking, but it also provides refuge to elephants, chimpanzees, monkeys and various small antelopes, as well as 23 bird species restricted to the Albertine.

**Accommodation: Nkuringo Bwindi Lodge**

**Meal: B, L, D**

**Transit Time:**

**Approximately 5 hours**

**Day 9:12.09.23**
**1<sup>st</sup> GORILLA TREKKING**


This morning you will get up early and go for gorilla trekking. Trekking the Mountain Gorilla is one of the most exciting wildlife experiences on earth. The trek will take between 2 and 6 hours, but is well worth the effort. You will be led by an experienced ranger who will tell you interesting facts about flora and fauna and the lifestyle of the Gorillas.

**Accommodation: Nkuringo Bwindi Lodge**

**Meal: B, L, D**

**Day 10:13.09.23**
**2<sup>nd</sup> GORILLA TREKKING**


Today you will get up early and once again go for a second trekking of the gentle giants. A thrilling trek through the Impenetrable forest led by an experienced ranger Guide provides inspiring views in all directions. You will trek a different family and get to spend time watching the adults feeding their young ones, brushing and resting as the youngsters play from vines in a pleasurable playful display.

**Accommodation: Nkuringo Bwindi Lodge**

**Meal:**

**B,L,D**

**Day 11:14.09.23**
**DRIVE TO LAKE MBURO NATIONAL PARK**


Today, drive to Lake Mburo National Park. Even at the entrance to the park you can watch impalas and zebras. You will have a game drive as you enter the park. The Lake Mburo National Park forms a mosaic-like habitat with rocks, dry slopes, open and wooded savannas, forests, and swamps increases. This diversity of habitats has the diversity of bird life with 313 bird species recorded in the park, including flame head Barbet, Long-tailed Zitting Cisticola (Tabora), African Bins Rail, Collared Barbet,

binding Bush singer among others.

**Accommodation: Kigambira Safari Lodge**

**Meal:**

**B,L,D**

**Transit Time:**

**Approximately 6hours, 244kms**

**Day 12:15.09.23 NATURE WALK AND DEPARTURE**

Morning nature walk and later drive to Entebbe while crossing the Equator a long the way where you will stop to buy a few souvenirs. You will later arrive at the Airport where you will be dropped off to catch your departure flight.

**Meal:**

**B,L,-**

**Transit Time:**

**Approx. 2.5 hours' drive, 108km**

**Quote:****High end accommodation standard:****Maximum 8 Pax: Euro 7.590,00 + USD 1.400,00 for 2 Gorilla Permits per Person****Single surcharge: Euro 1.450,00 per Person****Included Services:**

- 11 Overnight stays and meals in lodges on Bed & Breakfast + Full Board
- In cases where warm lunches are not provided, you shall have packed lunch
- A professional and experienced English speaking Guide.
- Transportation in 4\*4 Landcruiser Jeep with pop up roof, Fuel on entire tour
- Max. 4 Pax per vehicle
- Ferry crossing
- All Entrance fees and game drive fees, all relevant government tax.
- Mineral Water while on the Tour

**Excluded services:**

- International flight and visa fees to Uganda and back home
- Tips, souvenirs, any soft drinks and any personal purchases
- Any Optional activities or those not included in the program.

**Maximal 8 Personen können mitfahren – ich werde diese Reise persönlich begleiten.****Liebe Grüße****Euer Stephan****Hamburg, im September 2022.**